



SHIFT\_

# LIVINA



**Test Drive the Nissan Livina**

visit our website at: [www.nissan.co.za](http://www.nissan.co.za)

Phone us toll free:

0800 NISSAN

0800 647 726

October 2012

BR12E-0C11A0





# CONTENTS

THE URBAN ADVENTURE	01
EXPRESSIVE DESIGN	03
SPIRITED PERFORMANCE	06
THE SPACE BETWEEN	07
THE GRAND LIVINA	10
WITH SAFETY COMES FREEDOM	11
DIMENSIONS	13
COLOURS & TRIM	14
SPECIFICATIONS	15





# THE URBAN ADVENTURE

At some point you made a decision to live in the city. It might have been the pace, the lights... maybe it's the feeling that this is where the world is moving. Flexible, responsive and ready to take on life's next adventure, you're a Nissan LIVINA driver. This is why...



# EXPRESSIVE DESIGN

The Nissan LIVINA'S attractive styling is not only pleasing to the eye, but also embraces its clever, functional design. The sleek muscular silhouette and cambered roofline sweep up to the tailgate, giving you larger windows to look out on to the world. The wheels, pushed to the ends of the body, offer a confident stance and inside, more interior space. With its exciting range of vibrant colours, the Nissan LIVINA makes a powerful statement combining contemporary styling, surefooted performance and versatile space.







# SPIRITED PERFORMANCE

Whether you're running around the city or opening up on the highway, the Nissan LIVINA is as energetic as it looks.

Behind the wheel you'll experience responsive acceleration and effortless cruising. The lively 1.6 litre engine produces 80kW of power, 153Nm of torque and combines vitality with economy.

Enjoy the smooth, stable ride from the high specification suspension that minimises body roll, increases line stability on different road surfaces and enhances tractability during lane changes. This, with electric power steering, ensures control and secure handling for every situation.



# THE SPACE BETWEEN

The Nissan LIVINA has a spacious, airy interior with plenty of room for people and everything you might need to take along with you.

It takes seconds to feel at home in the Nissan LIVINA. An adjustable steering column and comfortable cockpit is just the starting point. Contoured seats are tailored for your comfort in soft, high quality upholstery and the sub-ventilation air-conditioning system cools the cabin without direct airflow.

The Nissan LIVINA also has a class leading luggage area. The 60/40 split rear seats recline and fold flat to significantly extend the luggage room and accommodate bulky or longer items with ease. An effortless pull of a lever is all it takes to change to a different configuration while hooks retain the tonneau cover to hide your luggage from inquisitive eyes.

All this adds up to intelligent functionality, perfectly in tune with your changing needs.







# THE GRAND LIVINA

The Nissan GRAND LIVINA takes versatility to a new level, moving fluidly and effortlessly from 5 seats to 7. The rear seats are simple to adjust for your changing needs. A single lock release strap folds or raises the rear seats for different configurations. The third row is easy to enter and has its own set of cup holders. When the third row is folded flat, the huge cargo area easily transports bulky items. It is perfectly equipped for people on the move.

The extensive use of sound absorbent materials diminish road noise and the pendulum mount engine system reduces vibration resulting in a quiet cabin.

Plenty of room. A comfortable and quiet cabin. Get used to a thoroughly rewarding interior.





# WITH SAFETY COMES FREEDOM

You have a spirit of adventure and want to take on life with confidence. The advanced active and passive safety systems lets you take to the road with complete peace of mind. The protective safety system includes a strong and rigid safety cell, driver airbags and 3-point seatbelts.



Powerful halogen headlamps provide a wide arc of strong illumination to cut through darkness and bad weather and a high mounted stop lamp alerts drivers behind you of your intentions.

In emergency braking, ABS brakes will prevent the wheels from locking so you can steer around obstructions. Electronic Brake force Distribution (EBD) regulates front and rear braking pressure for maximum braking efficiency and Brake Assist (BA) senses emergency braking, reducing stopping distance (ABS, EBD and BA available only on Acenta models).

The Nissan Anti-Theft System (NATS), including central locking and immobiliser, takes care of the security requirements. All Nissan vehicles are fitted with the Nissan DataDot anti-theft identification system as standard.





# DIMENSIONS

LIVINA



GRAND LIVINA



## Nissan's commitment to quality

To provide all customers with a consistently high level of quality, Nissan applies the same standards worldwide, to ensure that all Nissan owners enjoy peace of mind for the lives of their vehicles. The approach is based on quality from the customer's perspective on three key elements: First, the expectation of a smooth driving experience with complete peace of mind. Second, the intangible appeal of a vehicle, its power to captivate and excite, with features that capture attention and imagination. Third, the level of attentiveness and service during the sales process, and long after the sale is concluded.



## Nissan's commitment to the environment

Nissan's environmental philosophy embraces people, vehicles and nature. In the pursuit of a sustainable mobile society, the Nissan Green Program aims to reduce the environmental impact of Nissan vehicles at every stage of the vehicle life cycle, while corporate activities address environmental challenges.

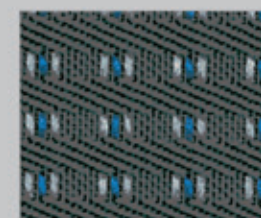
# COLOURS

LIVINA AND GRAND LIVINA AVAILABLE IN:

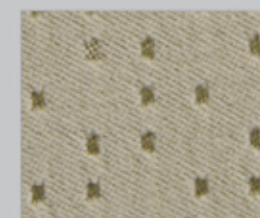


Techno Grey is only available for Nissan Grand Livina and Starling Blue is only available for Nissan Livina.

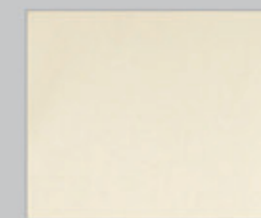
# TRIM



Livina  
Visia and Acenta  
(Fabric)



Grand Livina  
Acenta  
(Fabric)



Grand Livina  
Acenta+  
(Leather)

\* Special order



SPECIFICATIONS AND FEATURES					
Model		Livina 1.6 Visia M/T	Livina 1.6 Acenta M/T	Grand Livina 1.6 Acenta M/T	Grand Livina 1.6 Acenta+ M/T
Body type		5 Door hatch	5 Door hatch	5 Door MPV	5 Door MPV
Transmission		5-speed manual	5-speed manual	5-speed manual	5-speed manual
Seating capacity		5	5	7	7
ENGINE & PERFORMANCE					
Number of cylinders		4	4	4	4
Maximum power	kW	80	80	80	80
Maximum torque	Nm	153	153	153	153
Engine displacement	cc	1598	1598	1598	1598
Fuel type		Unleaded petrol	Unleaded petrol	Unleaded petrol	Unleaded petrol
Fuel injection		Multi-point	Multi-point	Multi-point	Multi-point
CO <sub>2</sub> emissions level	g/km	165	165	168	168
DRIVE TRAIN					
Gear ratio:	1st	3,727	3,727	3,727	3,727
	2nd	2,048	2,048	2,048	2,048
	3rd	1,393	1,393	1,393	1,393
	4th	1,029	1,029	1,029	1,029
	5th	0,821	0,821	0,821	0,821
	Reverse	3,545	3,545	3,545	3,545
Final drive ratio		4,067	4,067	4,067	4,067
Drive type		2WD	2WD	2WD	2WD
DIMENSIONS & WEIGHTS					
Overall length of vehicle	mm	4180	4180	4420	4420
Overall width of vehicle	mm	1690	1690	1690	1690
Overall height of vehicle	mm	1575	1575	1595	1595
Wheelbase	mm	2600	2600	2600	2600
Towing capacity	kg	400	500	500	500
Fuel tank capacity	l	52	52	52	52
Ground clearance	mm	177	177	178	178
WHEELS/TYRES					
Wheel size/type		14" Steel	14" Steel	14" Steel	15" Alloy
Wheel dimensions (front; back)		175/70 R14	175/70 R14	185/65 R15	185/65 R15
Spare wheel: Spacesaver		Standard	Standard	Standard	Standard
PERFORMANCE					
Top speed	km/h	180	180	180	180
Turning circle	m	5,2	5,2	5,2	5,2
SAFETY AND SECURITY					
Airbags		Driver	Driver & Passenger	Driver & Passenger	Driver & Passenger
ABS		N/A	Standard	Standard	Standard
Electronic Brake-force Distribution (EBD)		N/A	Standard	Standard	Standard
Brake Assist (BAS)		N/A	Standard	Standard	Standard
Brake type		Ventilated front discs; rear drums	Ventilated front discs; rear drums	Ventilated front discs; rear drums	Ventilated front discs; rear drums
Front fog lamps		N/A	N/A	Standard	Standard
High mounted stop lamp		Standard	Standard	Standard	Standard
Child-proof rear door lock		Standard	Standard	Standard	Standard
NATS immobiliser		Standard	Standard	Standard	Standard
Nissan DataDot anti-theft identification system		Standard	Standard	Standard	Standard

Model		Livina 1.6 Visia M/T	Livina 1.6 Acenta M/T	Grand Livina 1.6 Acenta M/T	Grand Livina 1.6 Acenta+ M/T
COMFORT & CONVENIENCE					
60/40 Rear seat split		Standard	Standard	Standard	Standard
Leg room 2nd row	mm	584	584	580	580
Leg room 3rd row	mm	N/A	N/A	456	456
Luggage capacity (VDA)	l	383	383	123 (with 3rd row up)	123 (with 3rd row up)
Luggage capacity (VDA)(with 2nd row down)	l	769	769	N/A	N/A
Luggage capacity (VDA) (with 3rd row down)	l	N/A	N/A	589	589
Luggage capacity (VDA)(with 2nd & 3rd row down)	l	N/A	N/A	946	946
Fuel flap release		Standard	Standard	Standard	Standard
Central locking		with remote	Standard	Standard	Standard
Electric power steering		Standard	Standard	Standard	Standard
Electric windows		Standard	Standard	Standard	Standard
Door mirrors		Black; manual	Body colour; electric	Body colour; electric	Body colour; electric
Steering wheel: Tilt adjustment		Standard	Standard	Standard	Standard
Audio system		N/A	AM/FM Radio, Single CD player, 6 speakers	AM/FM Radio, Single CD player, 6 speakers	AM/FM Radio, Single CD player, 6 speakers
Air-conditioner		Manual	Manual	Manual	Manual
Front wipers		2-speed intermittent	2-speed intermittent	2-speed intermittent	2-speed intermittent
Rear window de-mister		Standard	Standard	Standard	Standard
Interior light logic		Standard	Standard	Standard	Standard
Luggage area lamp		Standard	Standard	N/A	N/A
TRIMS & SEATING					
Dashboard		Aluminium style	Aluminium style	Wood-look trim	Wood-look trim
Seat upholstery		Cloth	Cloth	Cloth	Leather
DRIVER'S AREA					
Clock: digital		N/A	Standard	Standard	Standard
Tachometer: analogue		Standard	Standard	Standard	Standard
Speedometer: analogue		Standard	Standard	Standard	Standard
Trip meter: digital		Standard	Standard	Standard	Standard
Fuel meter		Standard	Standard	Standard	Standard
Low fuel warning light		Standard	Standard	Standard	Standard
Airbag check warning light		Standard	Standard	Standard	Standard
ABS check warning light		N/A	Standard	Standard	Standard
Engine oil pressure warning lights		Standard	Standard	Standard	Standard
Door open warning		Standard	Standard	Standard	Standard
Headlamp-on reminder chime		Standard	Standard	Standard	Standard
SERVICE AND WARRANTY INFORMATION					
Service intervals		15000 km	15000 km	15000 km	15000 km
Service plan		Optional	3 years /60 000km	3 years /60 000km	3 years /60 000km
Warranty and roadside assistance		3 years/100 000km	3 years/100 000km	3 years/100 000km	3 years/100 000km
Paint and mechanical warranty		3 years/100 000km	3 years/100 000km	3 years/100 000km	3 years/100 000km
Anti-corrosion warranty		3 year/unlimited kilometers	3 year/unlimited kilometers	3 year/unlimited kilometers	3 year/unlimited kilometers

Disclaimer: Every effort has been made to ensure that the contents of this brochure is correct at the time of going to print (October 2012). This brochure has been produced featuring prototype or accessorised vehicles exhibited at motorshows and, in accordance with the company's policy of continuously improving its products. Nissan South Africa reserves the right to change the specifications and the vehicles described and shown in this brochure at any time. Nissan dealers will be informed of any such modifications as quickly as possible. Please check with your local Nissan dealer to receive the most up-to-date information. Due to the limitations of the printing process used, the colours shown in this brochure may differ slightly from the actual colours of the paint and interior trim material used. All rights reserved. Reproduction in whole or part of this brochure without the written permission from Nissan is forbidden.

Quoted fuel consumption and emission values have been established using the prescribed method of measurement (United Nations Economic Commission for Europe "ECE " Regulation R101 in the current version) as required under current legislation. This data does not pertain to the specific vehicle and does not comprise part of the offer, but is supplied for the purpose of comparison between the various types of vehicle, in accordance with 1999/94/EC. Driving behaviour / conditions and other non-technical factors contribute towards a vehicle's fuel consumption and CO2 emissions over and above the determined fuel efficiency of a vehicle.