



SHIFT_

LIVINA X-GEAR



visit our website at: www.nissan.co.za
Phone us toll free:
0800 NISSAN
0800 647 726

August 2012
BR12E-L10CA0

SHIFT_

A single word that captures more than a vision. More than a philosophy. It's a dedication to looking at the familiar in a different way. To opening the mind to new ways of thinking. And forever advancing the way people move through the world.





URBAN ADVENTURE	01
EXPRESSIVE DESIGN	04
SPIRITED PERFORMANCE	05
SPACE FOR YOUR GEAR	10
WITH SAFETY COMES FREEDOM	11
ACCESSORIES	14
DIMENSIONS	15
COLOURS & TRIM	16
SPECIFICATIONS	17

CONTENTS

URBAN ADVENTURE

Whether moving around suburbia or the highway, the Nissan Livina X-Gear is as energetic as it looks.

Flexible, adventurous, active and ready to challenge life's next adventure, the versatile Nissan Livina X-Gear is in pace with your dynamic lifestyle.

The Nissan Livina X-Gear, offers huge amounts of space for your adventure gear to take on exciting activities demanding state-of-the-art equipment. Whether it be sky diving kits or scuba gear for the deep blue; rope, cords and rock climbing gear for the ups and abseiling equipment for the downs... the Nissan Livina X-Gear has the space to take you there.

With its muscular stance, agile handling and interior comfort, the Nissan Livina X-Gear is everything you have been waiting for and much, much more...

It's what adventure should feel like.



EXPRESSIVE DESIGN



The Nissan Livina X-Gear's sporty looks aren't only pleasing to the eye, but also embrace its clever, adventurous design. The sleek, muscular silhouette and cambered roofline sweep up to the tailgate, giving you larger windows to peer into your world of urban adventure. The expressive design with the wheel arches forced to the outer limits of the body, offer a confident stance and increased handling agility. Inside, more interior space for everything from a kite surfing kit for the beach front or rock climbing gear for chasing awe-inspiring Friday afternoon sunsets. With sleek roof rails, door guards and brave 15" alloy wheels for heart-stopping weekend challenges, and its exciting range of vibrant colours, the Nissan Livina X-Gear makes a powerful statement combining contemporary styling, surefooted performance and space for your gear.



SPIRITED **PERFORMANCE**

In the cockpit, with your gear safely tucked in the huge luggage space, you'll enjoy responsive acceleration and effortless cruising. The lively 1.6-litre engine produces 80kW of power and 153Nm of torque, combining agility with real economy.

Enjoy the powerful, stable ride from the smooth suspension that minimises body roll, increases line stability on different road surfaces, and absorbs the added weight of your adventure gear in the back. This, together with the Nissan Livina X-Gear's electric power steering and powerful braking performance thanks to ABS, EBD and Brake Assist (available on the Acenta+ model), ensures safe control and secure handling for every challenge.





ADVENTURE



NISSAN
X-GEAR

SPACE FOR YOUR GEAR

The Nissan Livina X-Gear has a spacious, airy interior with plenty of room for you, your friends and all the equipment you may ever need to live out the challenge of urban adventure.

Similar to the individuality of your chosen living space, you immediately feel at home in the Nissan Livina X-Gear. An adjustable steering column, electric windows and mirrors and a myriad of comfort features allow you to focus on the challenge of turning everyday experiences into breath-taking adventures.

The 60/40 split rear seats recline and fold flat and out of the way to make room for your gear, be it for a kite surfing, a rendezvous with friends at the gym, or a weekend soaking up sunshine and fun.

Intelligent functionality. Perfectly in tune with your adventurous needs.

WITH SAFETY COMES FREEDOM

With advanced active and passive safety systems, the Nissan Livina X-Gear challenges you to take to the road with complete peace of mind. Designed from the ground up, the Nissan Livina X-Gear's protective safety systems include a strong and rigid safety cell, driver and passenger airbags (available on the Acenta+ model) and 3-point seatbelts.

In emergency situations or extreme braking, ABS brakes will prevent the wheels from locking so you can steer around tight bends or unexpected obstructions. Electronic Brake force Distribution (EBD) regulates front and rear braking pressure for maximum braking efficiency and Brake Assist (BA) applies full braking power to reduce stopping distance. (ABS, EBD and BA are only available on the Acenta+ model).

After a long day of leisure, the Nissan Livina X-Gear's powerful halogen headlamps cut through the darkness with a wide arc of strong illumination, while a high mounted stop lamp alerts drivers behind you of your intentions.

The Nissan Livina X-Gear takes care of security requirements with the Nissan Anti-Theft System (NATS), including central locking and immobiliser as well as the Nissan DataDot anti-theft identification system as standard.



SAFETY SHIELD

Safety Shield is the commitment to 'Real World Safety'. NISSAN pursues innovation as part of its Safety Shield concept. Based on the idea that cars should help protect people, advanced protective safety technologies help driver and passengers to avoid danger and injury. Visit www.nissan.co.za to find out more.



ACCESSORIES

The Nissan Livina X-Gear adds a new dimension to compact car driving, bringing in style, utility and all round individuality. Enhance these aspects of the Nissan Livina X-Gear with the peace of mind that comes with fitting quality assured accessories - Nissan Approved Accessories.

Opposite and below: Nissan Livina X-Gear accessories

- (i) Nissan Livina X-Gear Carpet Set
- (ii) Leather seats
- (iii) Towbar
- (iv) Boot Sill Protection & Boot Carpet

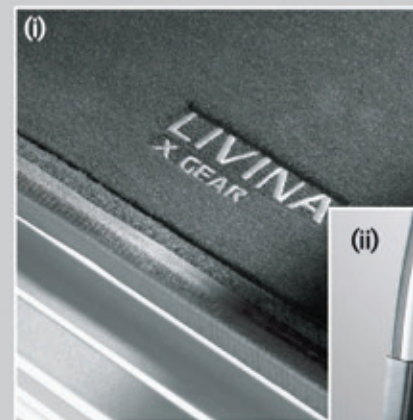
Speak to your Nissan dealer for more information on the full range.



(iii)



(iv)



(i)



(ii)

DIMENSIONS



Nissan's commitment to the environment

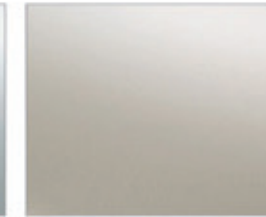
Nissan's environmental philosophy embraces people, vehicles and nature. In the pursuit of a sustainable mobile society, the Nissan Green Program aims to reduce the environmental impact of Nissan vehicles at every stage of the vehicle life cycle, while corporate activities address environmental challenges.

COLOURS & TRIM

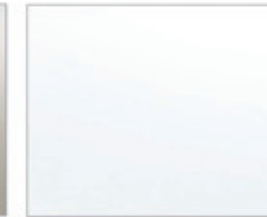
COLOURS



Bright Silver (M)
KYO



Thermal Gold (M)
K32



Arctic White (S)
QM1



*Infinite Black (M)
KH3



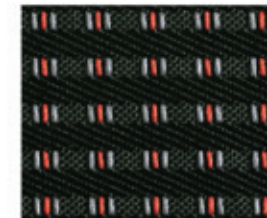
Claret Red (M)
AY4



Starling Blue (M)
B16

*Special order

TRIM



Nissan's commitment to quality

To provide all customers with a consistently high level of quality, Nissan applies the same standards worldwide, to ensure that all Nissan owners enjoy peace of mind for the lives of their vehicles. The approach is based on quality from the customer's perspective on three key elements:

First, the expectation of a smooth driving experience with complete peace of mind. Second, the intangible appeal of a vehicle, its power to captivate and excite, with features that capture attention and imagination. Third, the level of attentiveness and service during the sales process, and long after the sale is concluded.

SPECIFICATIONS

LIVINA X-GEAR

Model		Livina X-Gear 1.6 Visia M/T	Livina X-Gear 1.6 Acenta+ M/T
Body type		5 Door Hatch	5 Door Hatch
Transmission		5-speed manual	5-speed manual
Seating capacity		5	5
ENGINE			
Number of cylinders		4 Cylinders	4 Cylinders
Maximum power	kW	80	80
Maximum torque	Nm	153	153
Engine displacement	cc	1 598	1 598
Fuel type		Unleaded petrol	Unleaded petrol
Fuel injection		Multi-point	Multi-point
DRIVE TRAIN			
Gear ratio	1st	3.727	3.727
	2nd	2.048	2.048
	3rd	1.393	1.393
	4th	1.029	1.029
	5th	0.821	0.821
	Reverse	3.545	3.545
	Final drive ratio	4.067	4.067
Driven wheels		2WD	2WD
DIMENSIONS			
Overall length of vehicle	mm	4420	4420
Overall width of vehicle	mm	1690	1690
Overall height of vehicle	mm	1595	1595
Wheelbase	mm	2600	2600
Towing capacity	kg	400	500
Ground clearance	mm	177	177
Fuel tank capacity	ℓ	52	52
WHEELS/TYRES			
Wheel Type/size		15" Alloy	15" Alloy
Wheel dimensions (front; back)		185/65 R15	185/65 R15
Spare wheel		Space saver	Space saver
PERFORMANCE			
Top speed	km/h	180	180
Minimum turning circle	m	5.2	5.2
SAFETY			
Airbags		Driver	Driver + Passenger
ABS		N/A	Standard
Electronic Brake force Distribution (EBD)		N/A	Standard
Brake Assist (BA)		N/A	Standard
Brake type		Ventilated front discs; rear drums	Ventilated front discs; rear drums
Front fog lamps		Standard	Standard
High mounted stop lamp		Standard	Standard
Child-proof rear door lock		Standard	Standard
SECURITY			
Immobiliser		Standard	Standard
NATS security		Standard	Standard
Nissan DataDot anti-theft identification system		Standard	Standard

SPECIFICATIONS

LIVINA X-GEAR

Model		Livina X-Gear 1.6 Visia M/T	Livina X-Gear 1.6 Acenta+ M/T
COMFORT & CONVENIENCE			
60/40 Rear seat split		Standard	Standard
Leg room 2nd row	mm	584	584
Luggage capacity (VDA)	ℓ	383	383
Luggage capacity (VDA) (with 2nd row down)	ℓ	769	769
Fuel flap release		Standard	Standard
Central locking		Standard	Standard
Electric power steering		Standard	Standard
Electric windows		Standard	Standard
Door mirrors		Black; manual	Body colour; electric
Steering wheel: Tilt adjustment		Standard	Standard
Audio system		N/A	AM/FM Radio, in-dash 6CD, 6 speakers
Air-conditioner		Manual	Manual
Front wipers		2 speed intermittent	2 speed intermittent
Rear window de-mister		Standard	Standard
Interior light logic		Standard	Standard
Luggage area lamp		Standard	Standard
TRIMS & SEATING			
Dashboard		Aluminium Style	Aluminium Style
Seat upholstery		Cloth	Cloth
DRIVER'S AREA			
Clock: digital		N/A	Standard
Tachometer: analogue		Standard	Standard
Speedometer: analogue		Standard	Standard
Trip meter: digital		Standard	Standard
Fuel meter		Standard	Standard
Low fuel warning light		Standard	Standard
Airbag check warning light		Standard	Standard
ABS check warning light		N/A	Standard
Engine oil pressure warning lights		Standard	Standard
Door open warning		Standard	Standard
Headlamp-on reminder chime		Standard	Standard
SERVICE AND WARRANTY INFORMATION			
Service Intervals		15000 km	15000 km
Service plan		3 years / 60 000km	3 years / 60 000km
Warranty and Roadside Assistance		3 years / 100 000km	3 years / 100 000km
Paint and mechanical warranty		3 years / 100 000km	3 years / 100 000km
Anti-corrosion warranty		3 years unlimited kilometres	3 years unlimited kilometres

DISCLAIMER

Every effort has been made to ensure that the content of this brochure is correct at the time of going to print (August 2012). This brochure has been produced featuring prototype or accessorised vehicles exhibited at motor shows and, in accordance with the company's policy of continuously improving its products, Nissan South Africa reserves the right to change the specification and the vehicles described and shown in this brochure at any time. Nissan dealers will be informed of any such modifications as quickly as possible. Please check with your local Nissan dealer to receive the most up-to-date information. Due to the limitations of the printing processes used, the colours shown in this brochure may differ slightly from the actual colours of the paint and interior trim materials used. All rights reserved. Reproduction in whole or part of this brochure without the written permission from Nissan is forbidden.

Quoted fuel consumption and emission values have been established using the prescribed method of measurement (United Nations Economic Commission for Europe "ECE" Regulation R101 in the current version) as required under current legislation. This data does not pertain to the specific vehicle and does not comprise part of the offer, but is supplied for the purpose of comparison between the various types of vehicle, in accordance with 1999/94/EC. Driving behaviour / conditions and other non-technical factors contribute towards a vehicle's fuel consumption and CO₂ emissions over and above the determined fuel efficiency of a vehicle.